

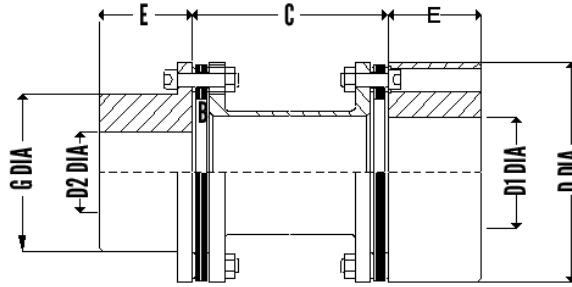


UNIQUE METAFLEX COUPLINGS

Series 80L SPL Coupling

This is a simple variation of basic Series 80 design with large hub at one end. This is especially suitable for Motor driven pumps where Motor shaft dia is much larger than pump shaft dia. Coupling OD/Weight/ Inertia and costs are minimum in this style for a given drive.

GENERAL ASSEMBLY DRAWING



DIMENSIONS AND STANDARD SIZES

Size	Nominal HP/100 RPM	Rating Torque NM	Peak Torque NM	Max Speed RPM	Max Bore D2 MM	Max Bore D1 MM	G Dia MM	E, Hub Length MM	D Dia MM	Std C MM
65	0.45	32	64	20000	28	24	34	28	63	100
80	0.9	64	128	20000	32	28	40	30	72	100
100	1.8	128	256	18650	38	32	46	32	83	100
125	2.6	185	370	15800	50	42	59	41	98	100
150	4	285	570	15800	50	42	62	45	102	100
162	7	500	1000	13900	60	48	71	48	111	140
180	9	640	1280	12500	67	55	78	55	125	140
200	12	855	1710	11200	75	55	84	54	138	140
220	15	1070	2140	10450	85	65	93	62	148	140
250	25	1780	3560	9200	105	80	114	76	168	140
300	56	3990	7980	7800	120	90	128	86	198	140
312	56	3990	7980	7800	120	100	140	86	198	140
350	70	4990	9980	7000	130	105	150	95	221	180

Mass, Inertia, Stiffness are at max bore with standard spacer dimension C listed above. Other C dimension are available as required on request . Hub dimensions can be modified to suit special needs. Max angular misalignment 0.50 Deg /Pack. Misalignment limits are for speeds upto 3000 RPM. For higher Speeds consult us. Bolt Tightening Torques - # for Disc Pack Bolts , ## for Hub Bolts.



**UNIQUE METAFLEX COUPLINGS****Series 80L SPL Coupling****ENGINEERING DATA**

Size	Mass	Inertia	Maximum Misalignment		Torsional Stiffness	Axial Spring	Bolt Tight Torque
	KG	KG.M ²	AXIAL MM	RADIAL MM	MNM/Ra	Rate N/MM	# NM
65	1.2	0.0006	1.0	0.6	0.01	25	6
80	1.6	0.0012	1.2	0.6	0.02	30	10
100	2.5	0.0023	2.0	0.6	0.06	50	24
125	4.0	0.0057	2.0	0.8	0.06	60	24
150	4.5	0.0069	1.3	0.8	0.06	150	24
162	5.9	0.0100	1.3	1.2	0.18	100	24
180	7.9	0.0180	1.5	1.2	0.20	130	48
200	9.5	0.0260	1.8	1.2	0.20	165	48
220	11.9	0.0390	2.0	1.2	0.26	130	48
250	17.4	0.0740	2.2	1.2	0.38	195	48
300	28.4	0.1700	3.0	1.2	0.64	370	200
312	27.4	0.1700	1.9	1.2	0.64	415	80
350	33.0	0.2000	2.0	1.2	1.07	500	200

Mass, Inertia, Stiffness are at max bore with standard spacer dimension C listed above. Other C dimension are available as required on request . Hub dimensions can be modified to suit special needs. Max angular misalignment 0.50 Deg /Pack. Misalignment limits are for speeds upto 3000 RPM. For higher Speeds consult us. Bolt Tightening Torques - # for Disc Pack Bolts , ## for Hub Bolts.

All Dimensions are in "mm" unless specified.

The dimensions are for standard execution and subject to change without notice.