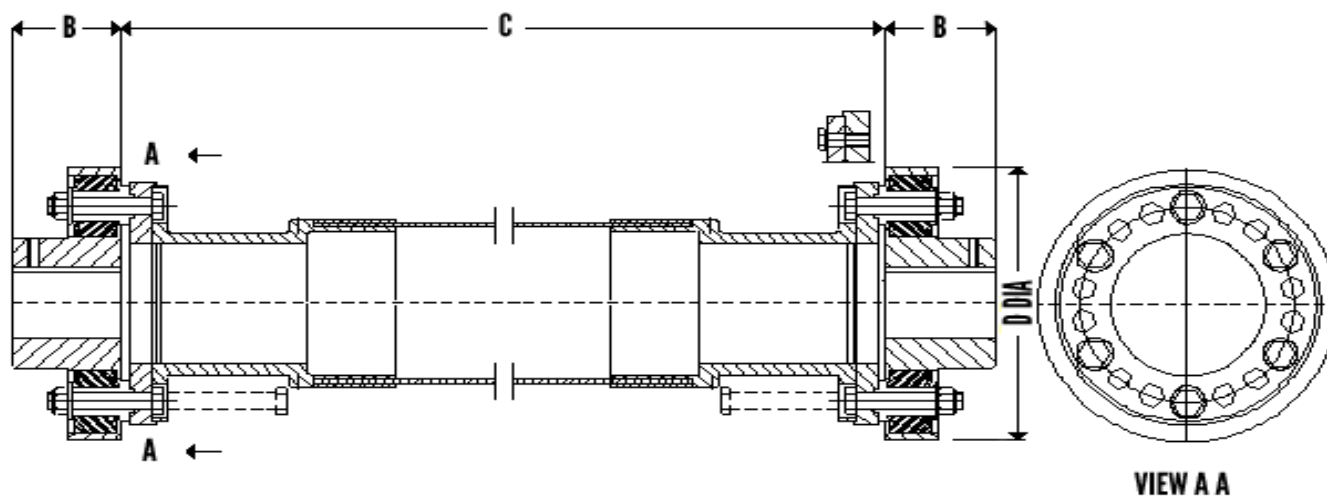


Unique SB COMPOSITE Drive Shaft - Single Span - for Cooling Tower
Tube Carbon Fibre/Mixed Carbon Fibre+ Glass Fibre
GENERAL ASSEMBLY DRAWING

FOR SIZES SB 1906/SB2206/ SB2706/SB3006

With over size Tube - requires no mid support Bearing Easy removal of spacer without shifting Motor / Gearbox

DIMENSIONS AND STANDARD SIZES

SIZE	HP/100 RPM	Max Motor HP (SF = 2)	Coupling OD , D mm	Hub Dia G mm	Max Bore mm	Hub Length mm	Tube ID/OD/TYPE inch	C Max mm	Torque Rating Tube Nm
SB 70-2/4-3-SS	6.9	50	178	81	55	59	3.0/3.28 SS	2700	1350
SB 1906-4-SS	13.5	100	190	92	65	70	4.0/4.23 SS	3200	2480
SB 1906-4-SL	13.5	100	190	92	65	70	4.0/4.23 SL	3650	2480
SB 2206-4-SS	18.5	138	220	106	75	80	4.0/4.23 SS	3200	2480
SB 2206-4-SL	18.5	138	220	106	75	80	4.0/4.23 SL	3650	2480
SB 2206-6-SS	18.5	138	270	106	75	100	6.0/6.25 SS	3900	4700
SB 2206-6-SL	18.5	138	270	106	75	100	6.0/6.25 SL	4400	4700
SB 2706-6-SS	36.5	270	270	116	80	100	6.0/6.25 SS	3900	4700
SB 2706-6-SL	36.5	270	270	130	90	100	6.0/6.25 SL	4400	4700
SB 2706-8-SL	36.5	270	270	130	90	100	8.0/8.25 SL	5100	7050
SB 3006-6-SL	50	370	300	140	100	110	6.0/6.25 SL	4400	4700
SB 3006-8-SL	50	370	300	140	100	110	8.0/8.25 SL	5100	7050

Type SL- All Carbon Fibre Type SS - Mixed Carbon Fibre/Glass Fibre
End Couplings can be Either Galvanised Steel or Stainless Steel Rubber Bushes- Neoprene Rubber reinforced Bolts & Nuts - SS304

C Max given for 1500 RPM applications. Longer lengths possible at reduced speeds.

Max Misalignment 1 Degree per coupling

Max offset parallel 60 mm for length of 3200 mm. Longer lengths can accommodate larger offsets.

Dynamic Balancing to Gr 16 ISO 1940 - Assembly trim balanced at operating speed